



3Dsurvey

Mapping and Aerial Image Processing Software

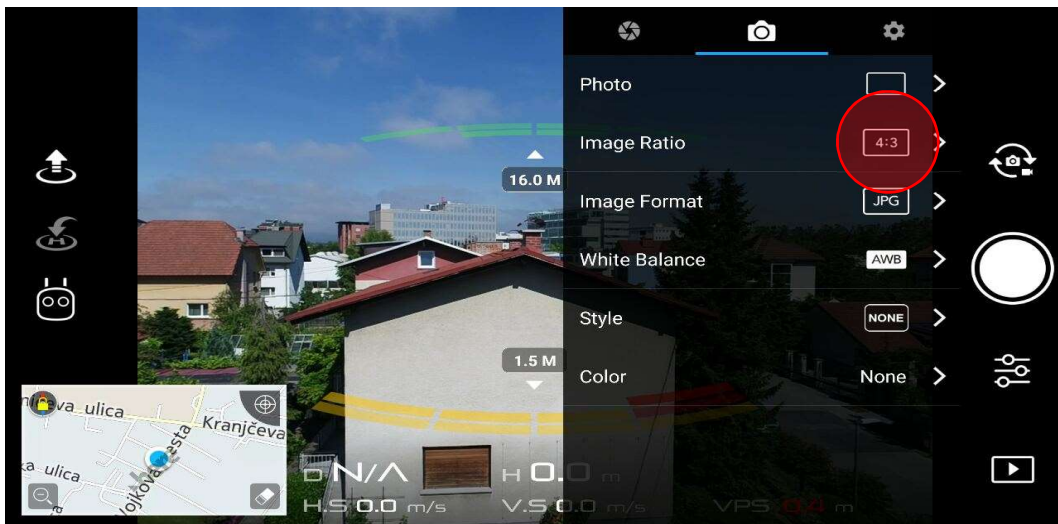
DJI GS PRO – Step by step instruction to plan your mission using DJI Drones

What you will need:

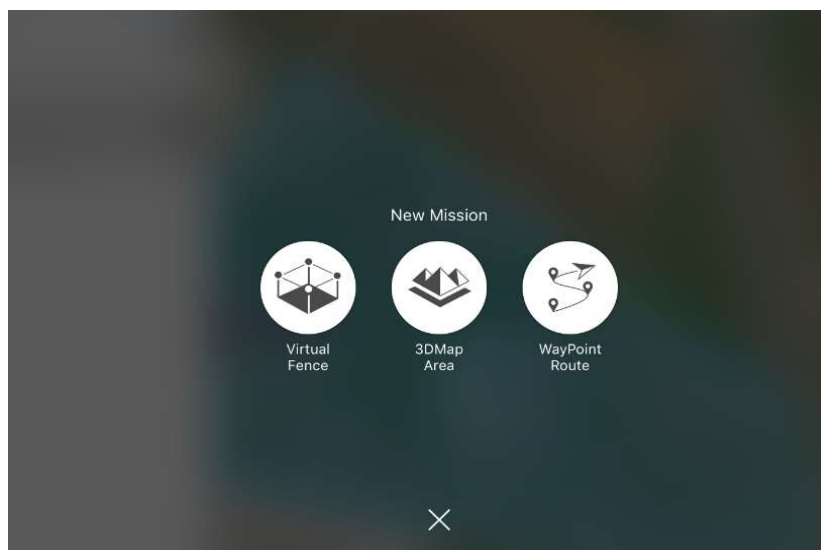
- DJI Go App (iOS / Android) – required to set your camera parameters
- DJI GS Pro App (iOS tablet) – To plan your mission

This article details how to plan and more generally prepare a mission in the DJI GS Pro app. It is recommended to perform these steps before going to the field and fly.

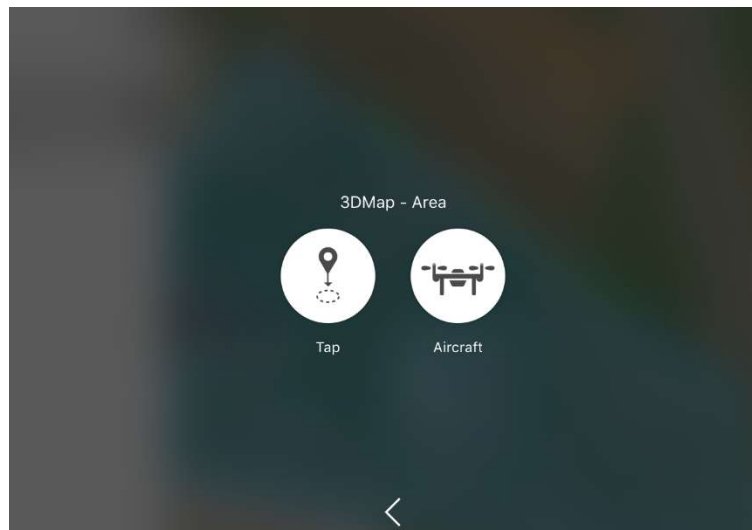
1. Turn on the Internet connection.
2. Make sure you have the correct camera settings. You can set this in DJI Go App. Image ratio should be 4:3.



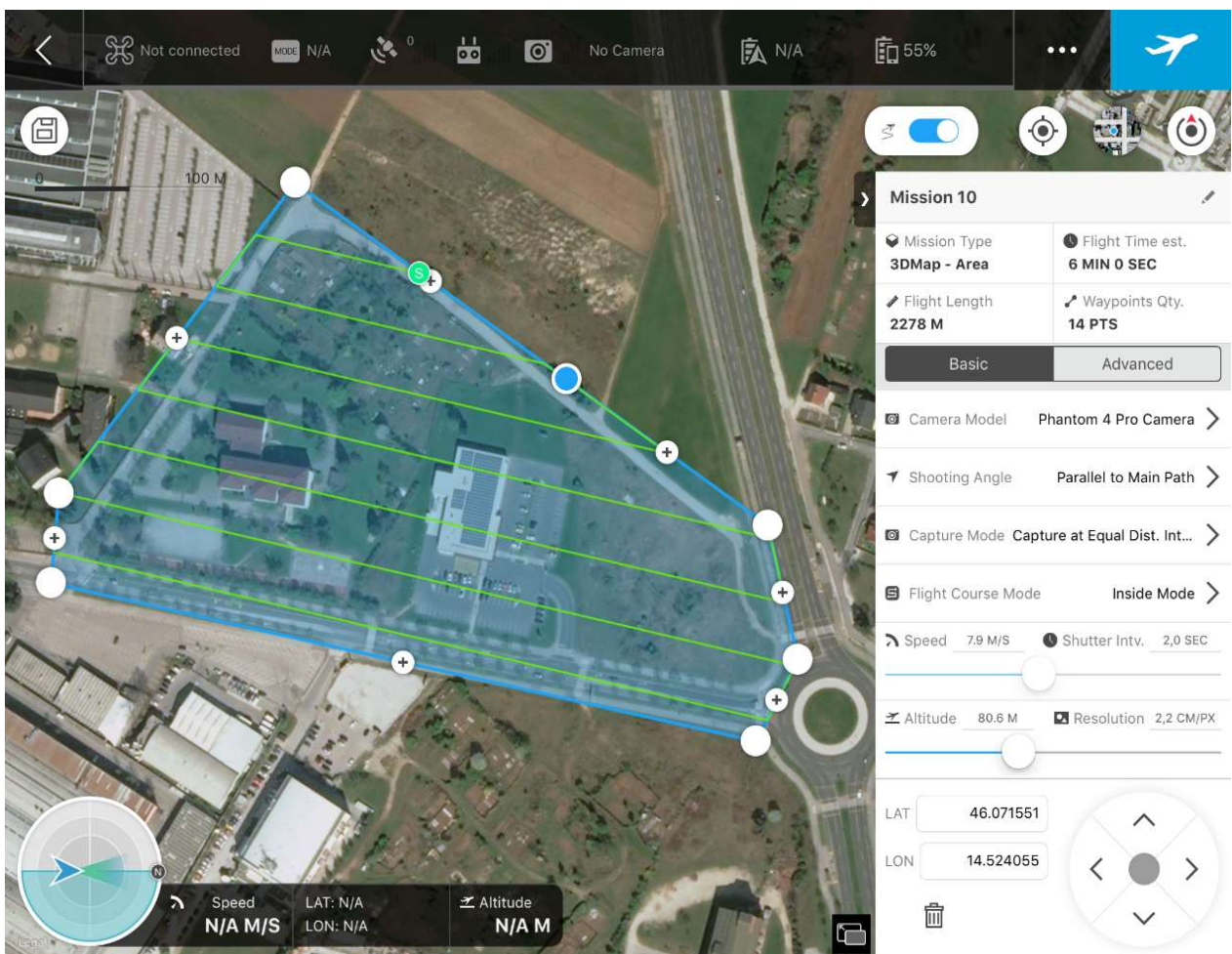
3. Open GS PRO app on iOS tablet (iPad, iPad Mini). Currently the GS PRO app is not available for Android devices.
4. Select 3D Map Area option.



5. If you're planning your mission from your office, select Tap. In case you're already out in the field, select Aircraft.

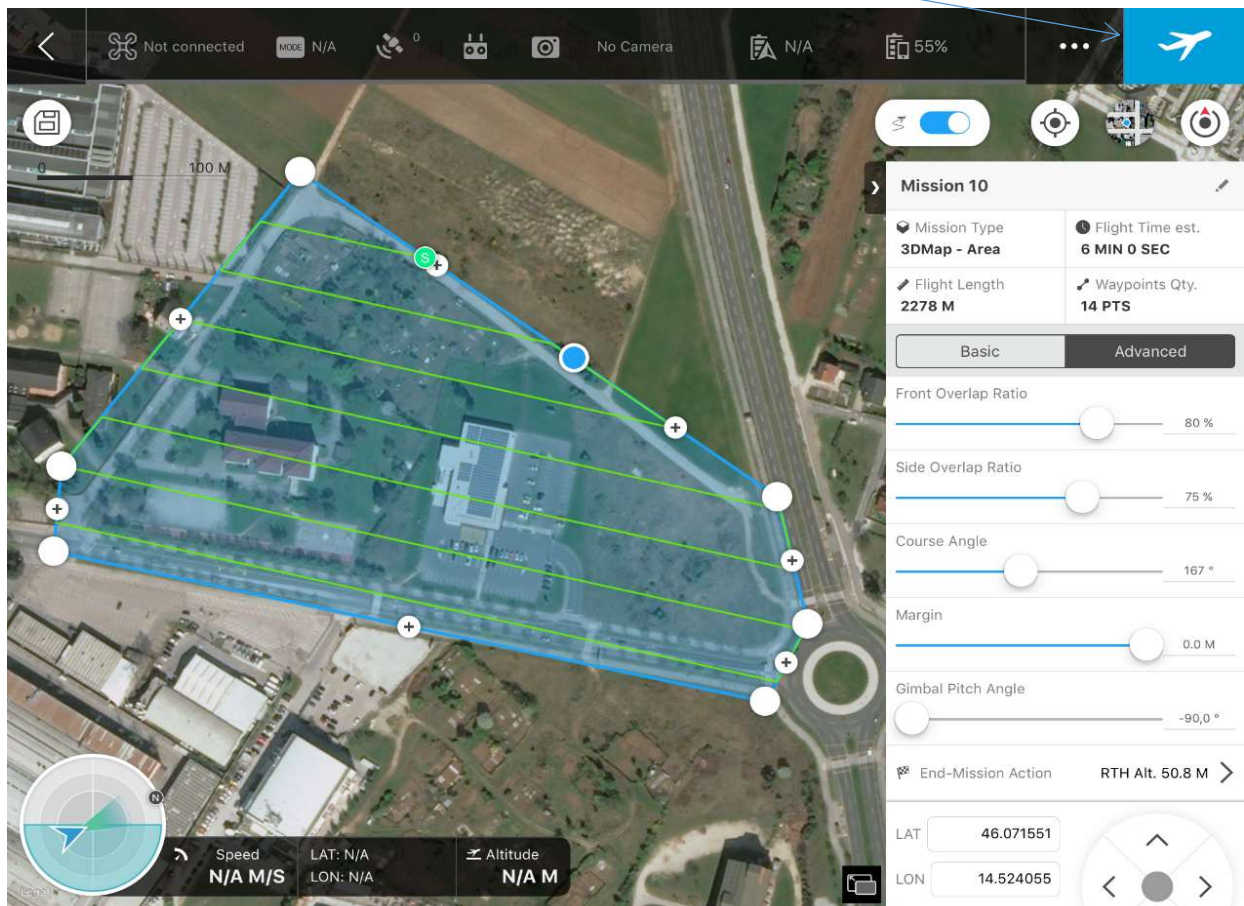


6. Select your area of interest by tapping/dragging the polygon on your screen.
7. Set mapping parameters by choosing Basic or Advanced tabs.



8. Set the Front overlap, Side overlap, Course angle and Gimbal Pitch, and set the drone action at the end of the flight – End-mission Action.

9. Tap the Start Flight button in the upper right corner.



10. Happy 3Dsurveying.