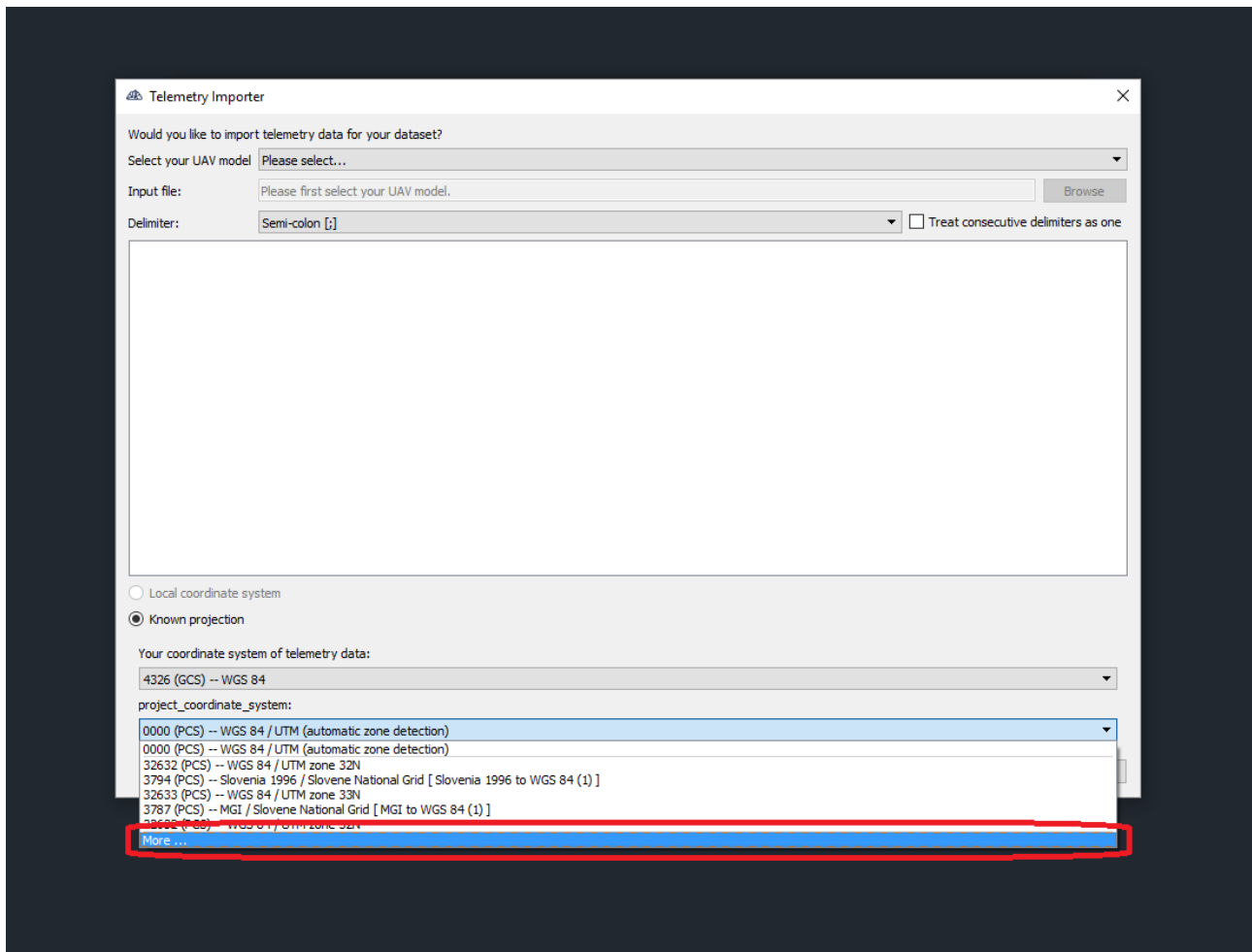


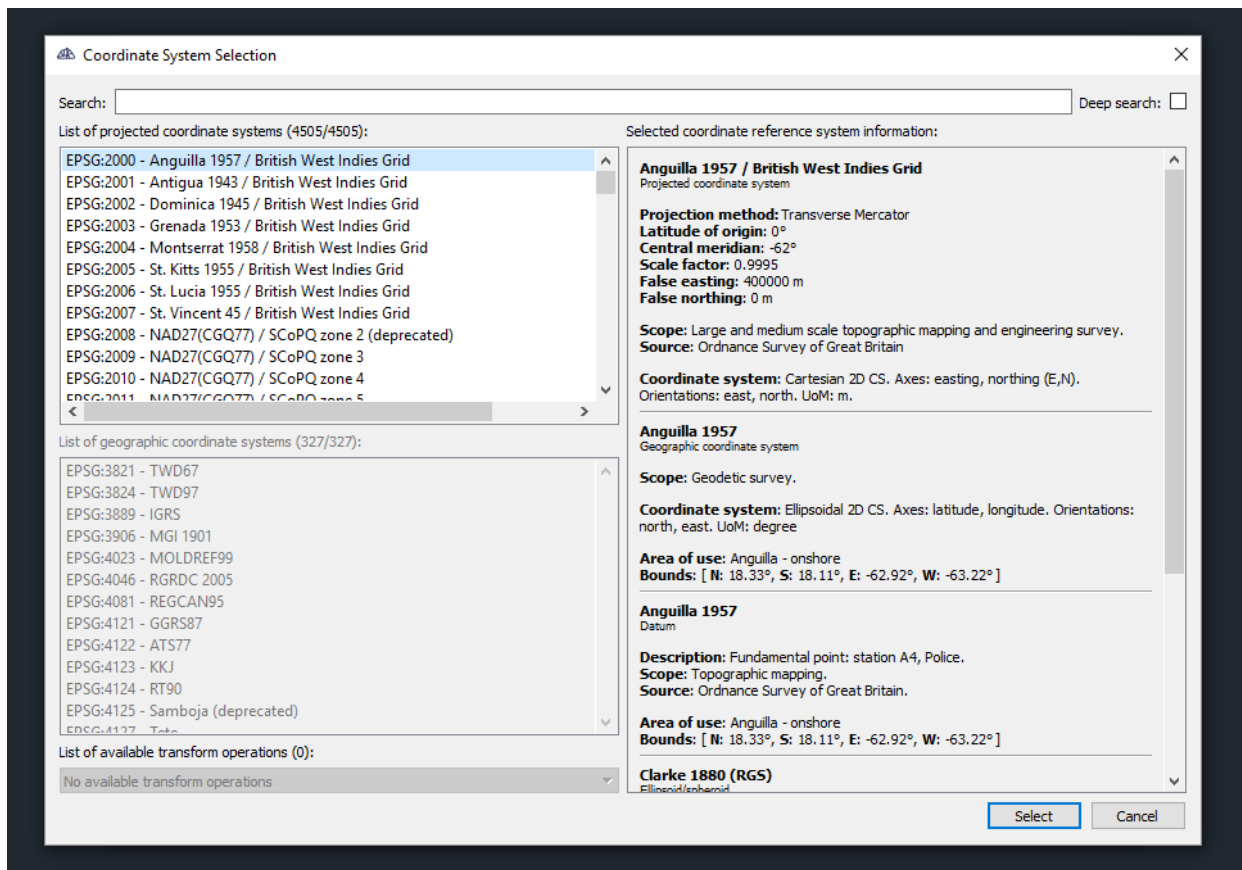
What's new in 3Dsurvey v2.5.0

Coordinate systems

3Dsurvey now supports most of world's coordinate systems.



They are accessible under "More" in coordinate system list.



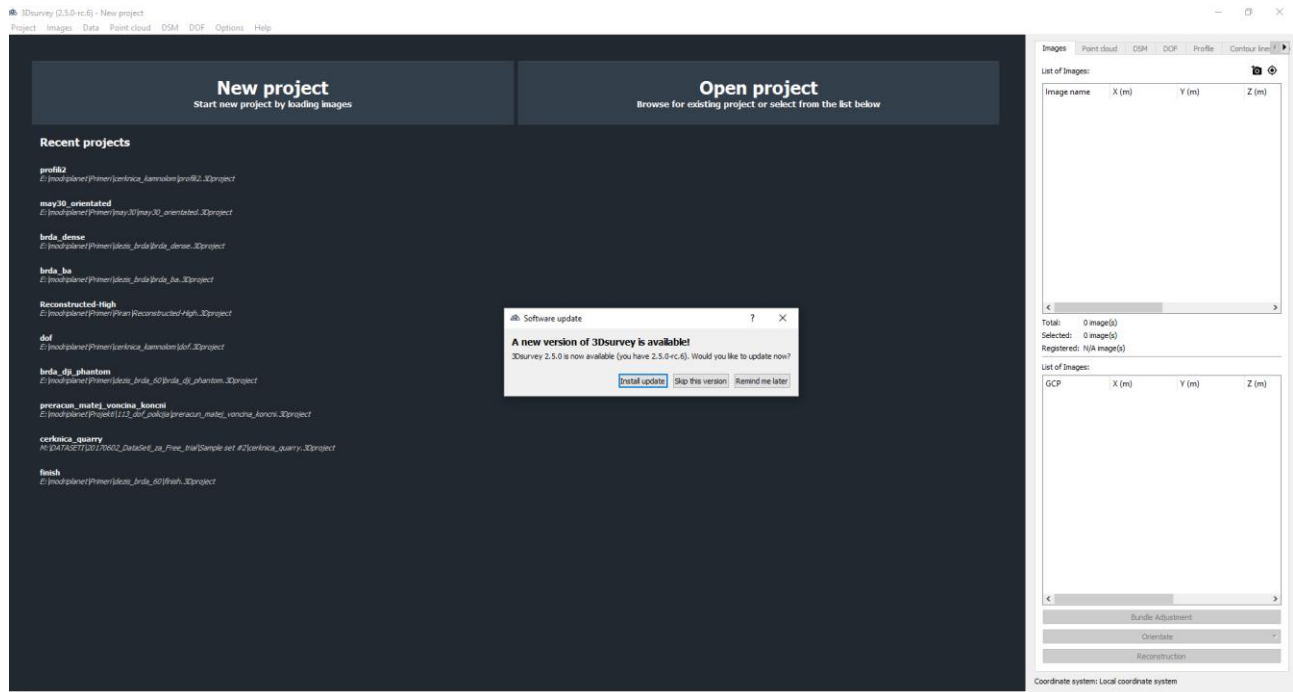
Improved user interface for Images tab

Additional data was added to List of Images, such as telemetry X, Y, Z positions, as well as information about number of tie points visible in each image, and telemetry error in pixels and meters.



Automatic updates

From this version onwards, whenever new update is available, 3Dsurvey will inform the user and offer an option to download and install the update.



New languages

3Dsurvey is now also available in Japanese, Greek and Dutch languages.

New profile export format

Profiles can now be exported in Caddy format.

XMP telemetry data parsing from images

As well as Exif telemetry import, 3Dsurvey now supports XMP data format used by some of the newer drones.

What's fixed in v2.5.0

Fixed point snapping with 50M+ points

Point snapping now works smoothly also on point clouds with more than 50 million points.

Fixed issues with 3D model texturing

Fixed “Cannot find textrecon” bug.

Model rotation does not perform area selection when in classification wizard

When user tries to rotate the point cloud in classification wizard, ‘select area’ action is no longer performed, as was intended.

Known issues in v2.5.0

Projects saved with version 2.4 and later will not open in version 2.3.x and older.

Slow processing on Intel Xeon machines with nVidia Quadro graphics cards (due to driver issues).

Sometimes the software is unable to bind the license to machine which can result in inability to use a software – in this case please contact 3Dsurvey support.

Application sometimes freezes when computer wakes up from sleep.