



3Dsurvey

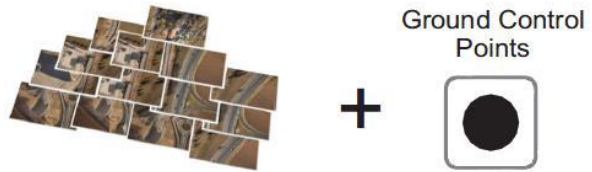
Aerial image processing software
Ver.: 2.1.2014



3Dsurvey is a software solution for data processing. Take a photo with standard digital camera, import images into 3Dsurvey and produce your own orthophotos (DOP), digital surface models (DSM) or calculate volumes faster and easier. Processing of data is performed automatically and is based on matching algorithms. With the help of smart tools you can work fast and easy.

Data processing:

1. Import images and ground control points.



2. Point cloud generation.



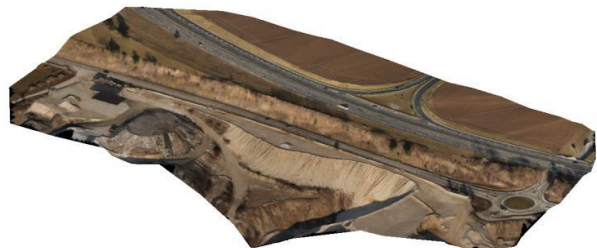
3. Digital surface model.



4. Digital orthophoto.



5. Textured 3D model.



Technical data	
Type of software	Photogrammetric software for aerial image processing
Input data	Images [*jpg], ground control points [*txt]
Point cloud production	Yes - photogrammetric
Digital surface modelling	Yes
Orthophoto production	Yes [*tiff with georeference file, * jpg with georeference file]

Functionalities	
Zoom, pan and rotate	Yes
Bounding BOX	Yes
Selecting points	Yes
Removing points	Yes
Undo/Redo	Yes
Flatten	Yes
Delete other	Yes
Height map	Yes
Point render size	Yes
View options (grid, wired only)	Yes
Fly troughs	Yes
Adding points	Yes
Geo-referencing	Yes

Advance Functionalities	
Volume measurement on one surface	Yes
Volume measurement on two surfaces	Yes
Ortopoto corrections	Yes
Orthophoto merge	Yes
Orthophoto cut	Yes
Profile lines	Yes
Import of classical 3D measurements	Yes
Automatic target detection	Yes
Automatic orientation [GCPs]	Yes
Stereo display option	No
Automatic removal of vegetation	No
Regular Grid options	Yes



Hardware and Software Requirements	
HD	Min. 5 GB of free space
RAM [GB]	4 minimum, 8 recommended
Graphic card	Support for OpenGL 3.0
Processor (CPU) :	64-bit

