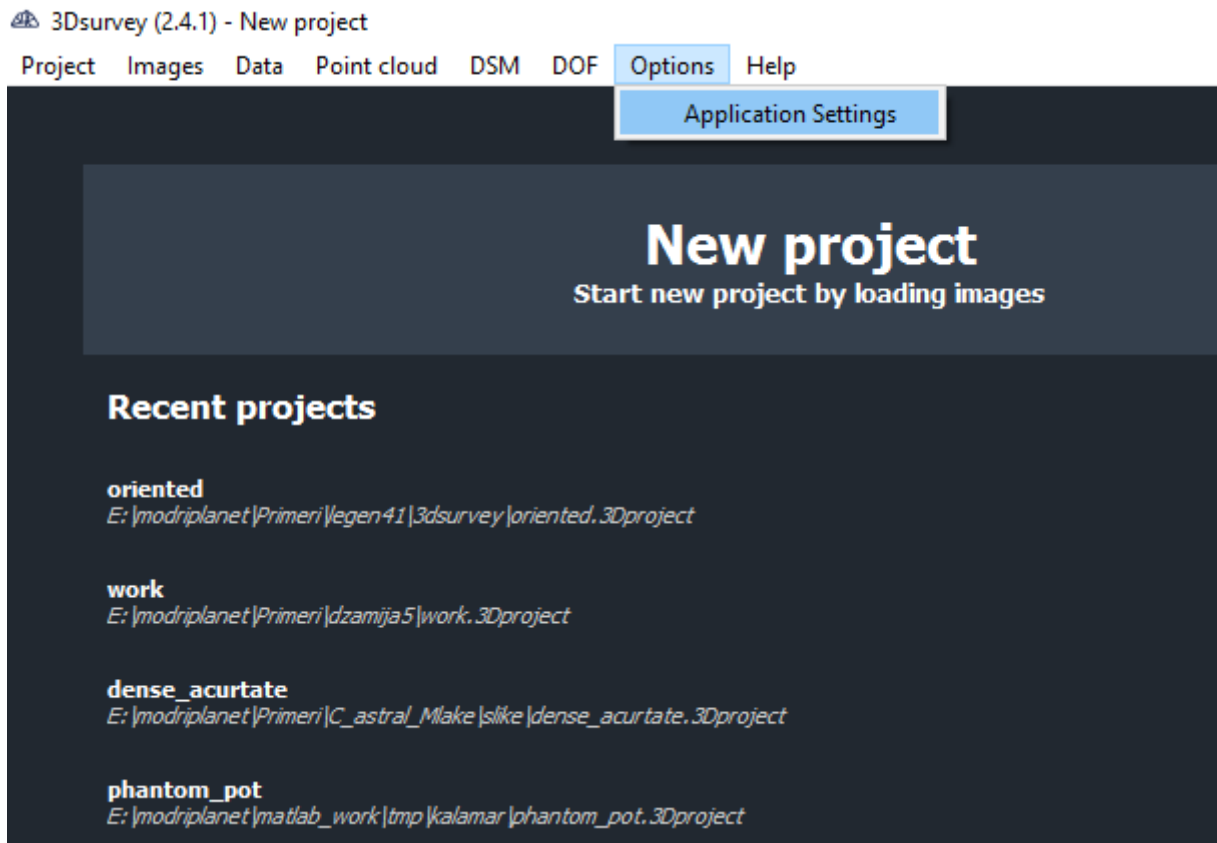
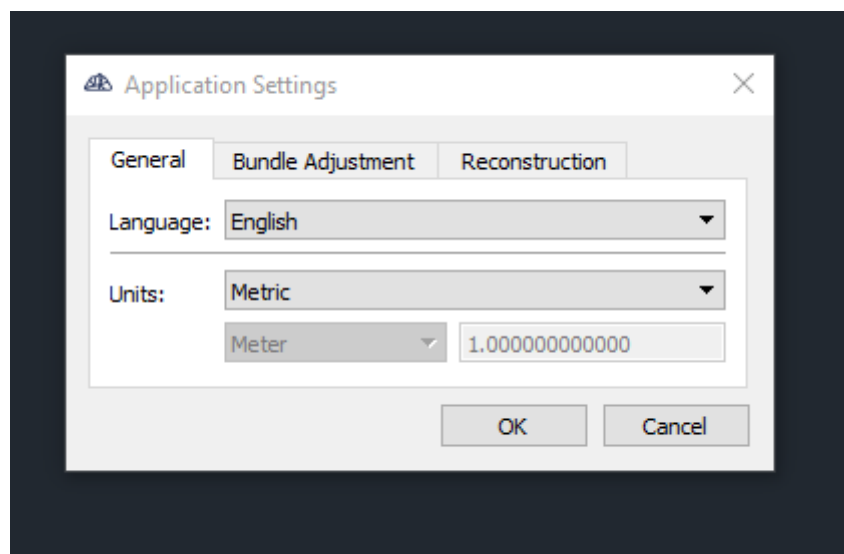


What's new in 3Dsurvey 2.4.1

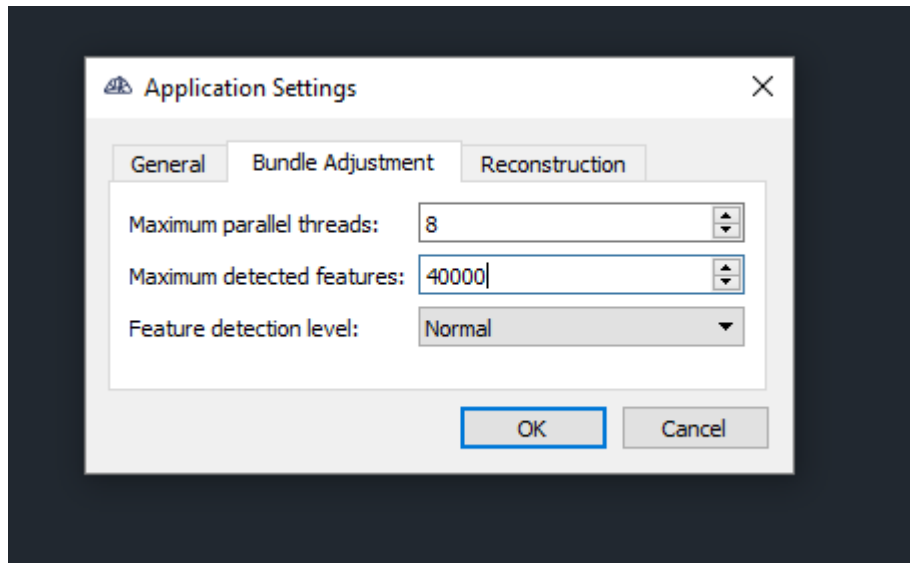
Application settings



User can now set units to meters or feet.

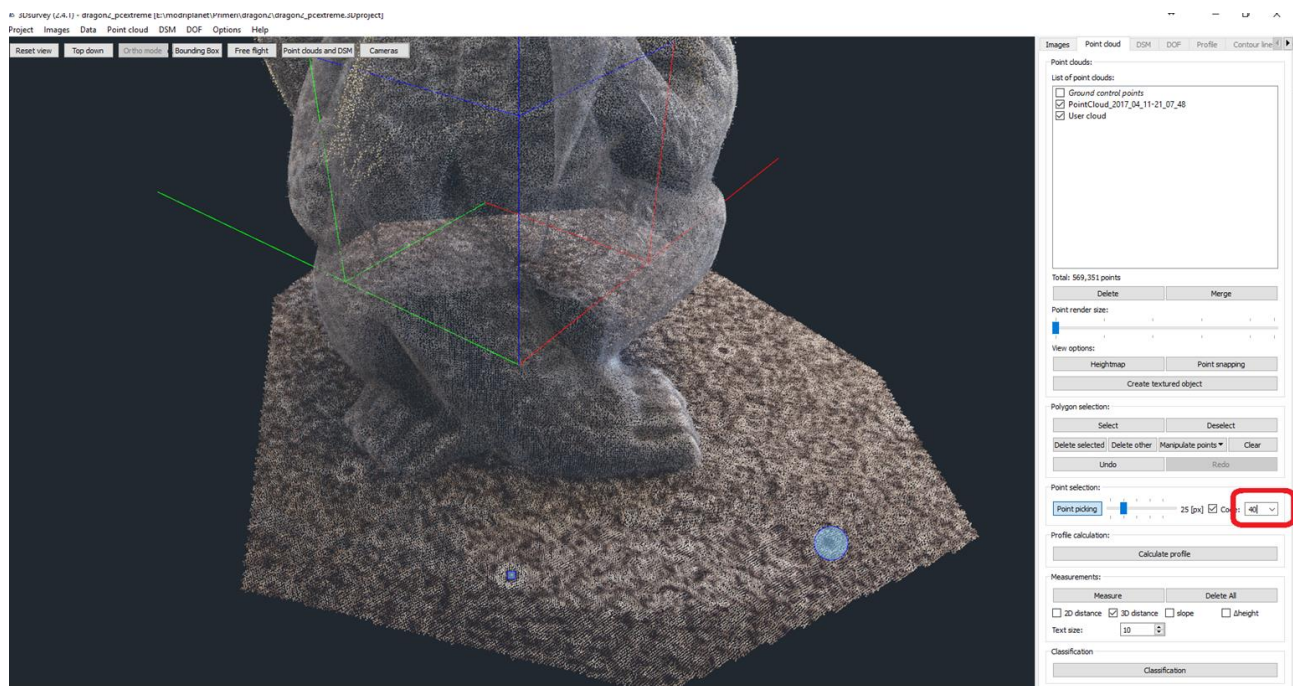


Feature detection level and maximum detected features can be changed – default value should be Normal detection level and 40000 Maximum detected features. For certain examples where not all images get registered this can be increased to High detection level with 60000 to 800000 Maximum detected features.



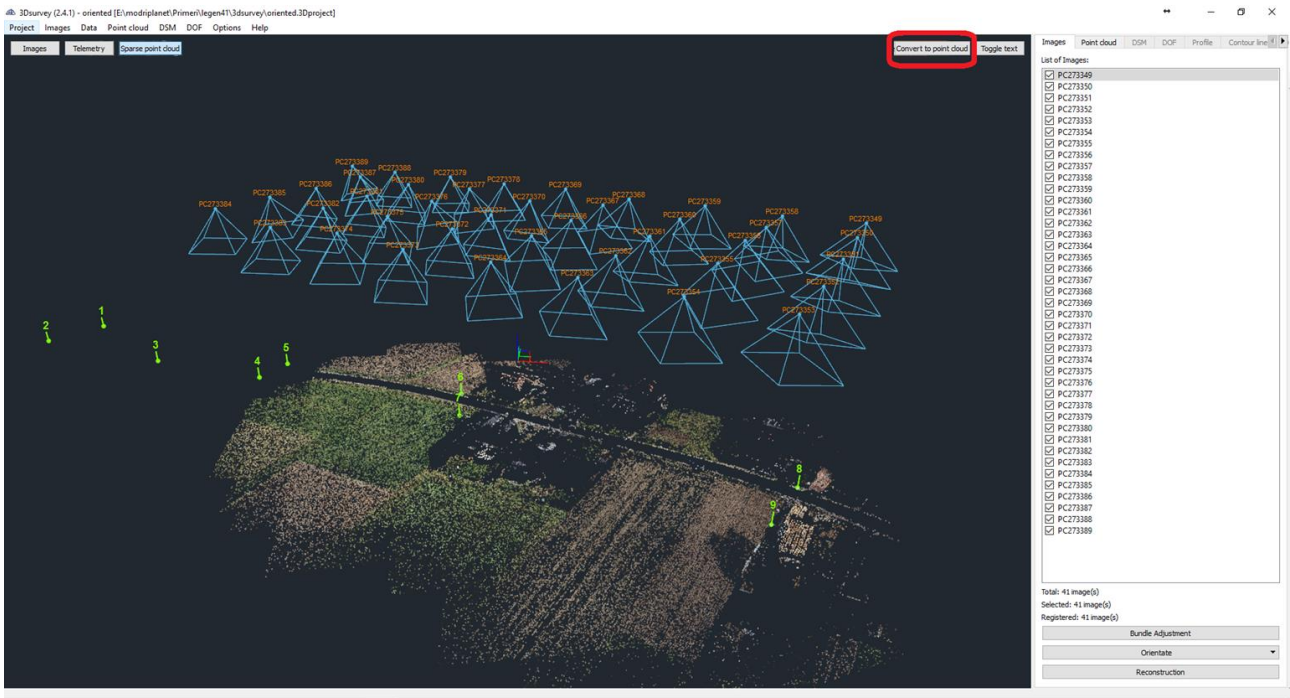
Coding the picked points

Code can be added to newly created picked points.



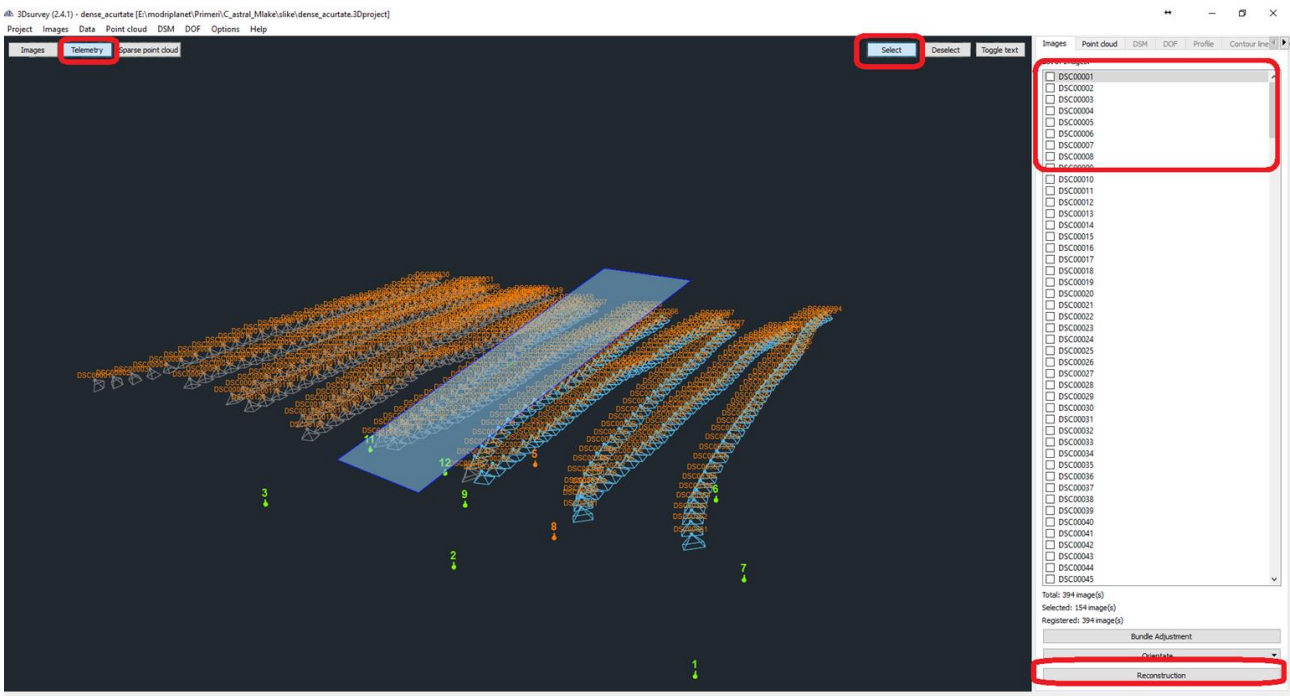
Sparse point cloud display added to Images tab

Sparse point cloud can be converted to point cloud by clicking Convert to point cloud button.

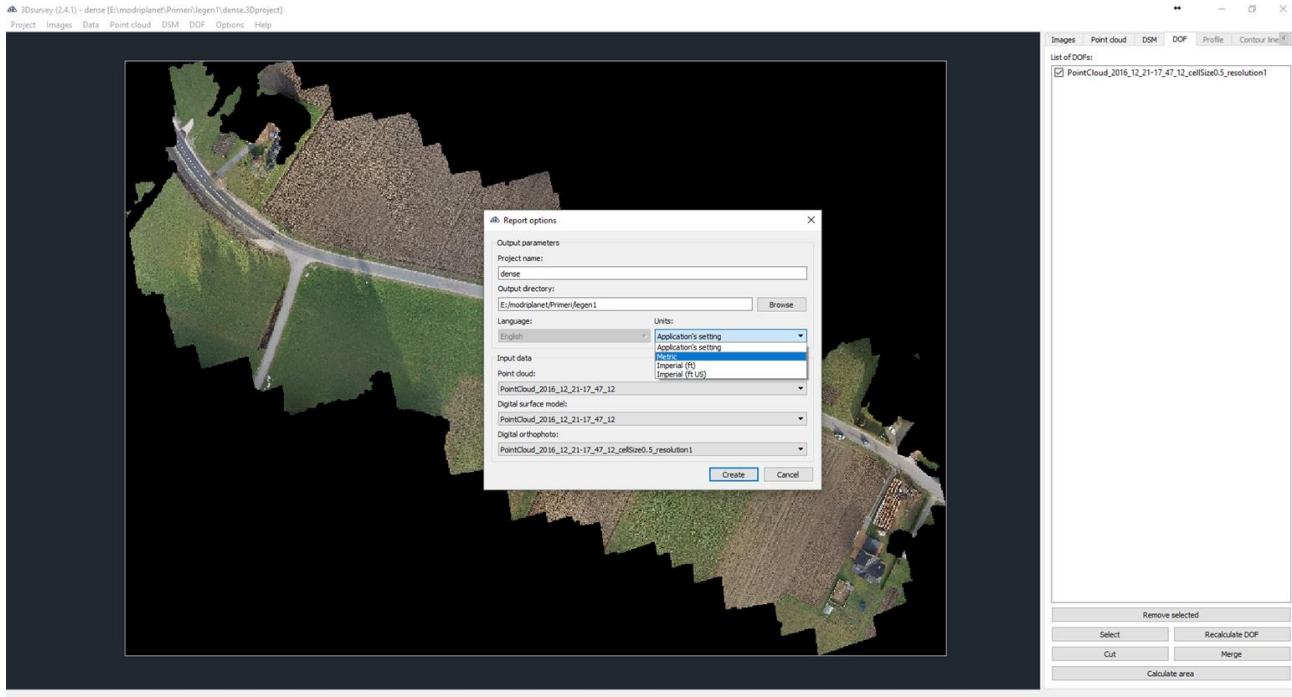


Option to reconstruct only selected images

Only selected images will be reconstructed during Dense reconstruction. They can be selected with checkboxes and in telemetry view.

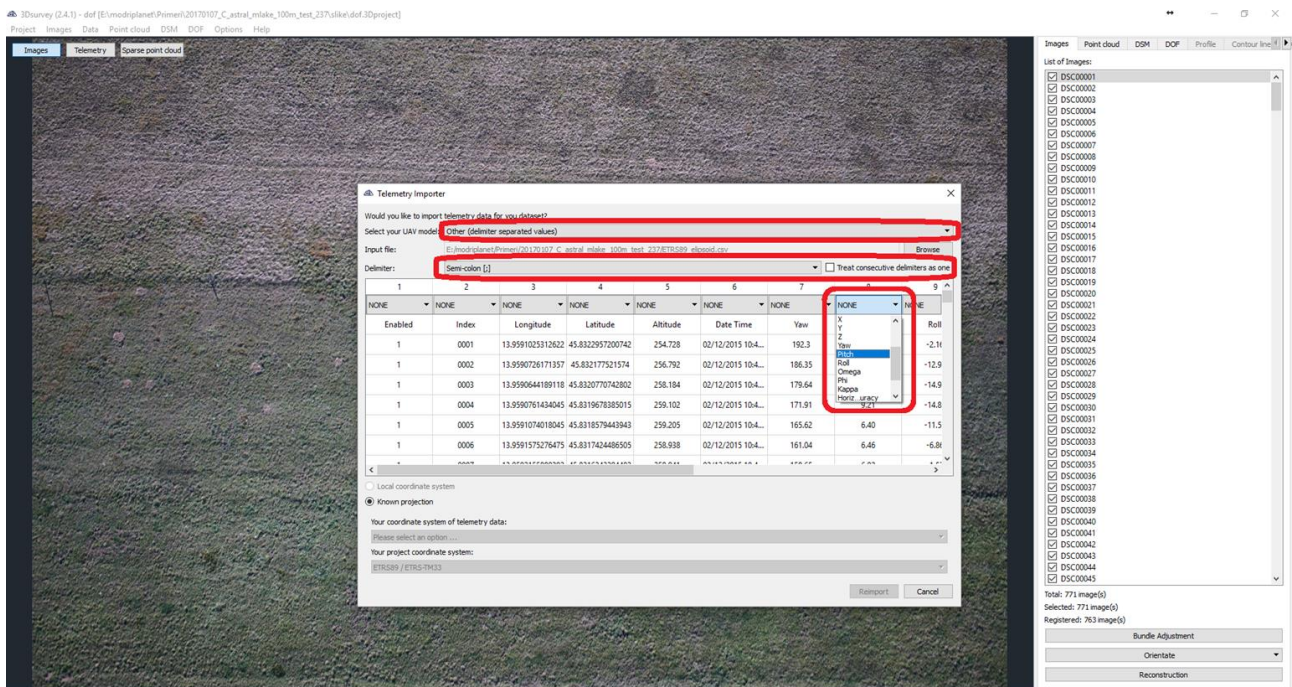


Report generation now supports imperial/metric unit selection



Support for custom telemetry formats

Custom telemetry formats can now be imported and customized in 3Dsurvey.



New licensing system

Instead of USB dongles we have implemented network licensing. It still works both online and offline.

Binary ply export format

Point clouds are now saved in binary ply format, reducing the file size, increasing loading and saving speed.

Better imperial unit handling

Significant bundle adjustment speed improvement for preset camera types

DJI Phantom and C-Astral Bramor lens distortion predefined and used during bundle adjustment phase.

Support for big datasets (3500+ images)

Note: depends on the hardware.

Profile calculation speed improvement

Improved mouse sensitivity for polyline selection on orthophoto

What's fixed in 2.4.1

Loading of point clouds where filename contains special characters

2.4.1 now supports loading of files with pathnames containing special character, such as Ü, 字, Š, etc.

Project loading with multiple orthophotos

Loading a project with high(er) number of orthophotos no longer causes a crash.

Fixed software crash cases in relation to huge datasets

Known issues in 2.4.1

Projects saved with version 2.4 and later will not open in version 2.3.x and older.